

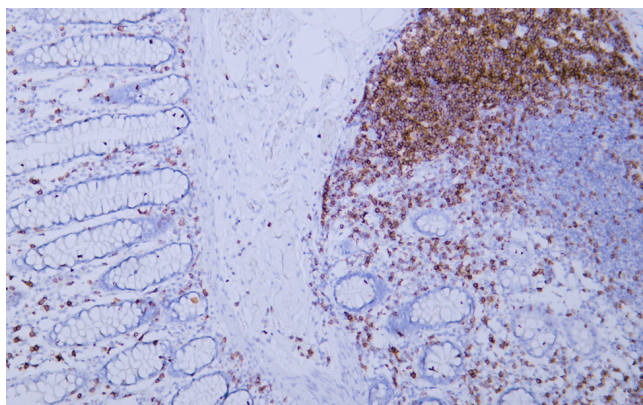


CD5 (ABT-CD5) mouse mAb

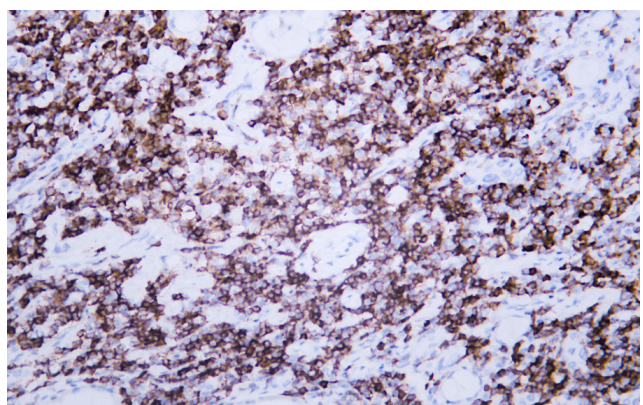
Catalog No	YP-Ab-15311
Isotype	IgG
Reactivity	Human
Applications	IHC, WB
Gene Name	CD5 LEU1
Protein Name	T-cell surface glycoprotein CD5 (Lymphocyte antigen T1/Leu-1) (CD antigen CD5)
Immunogen	Synthesized peptide derived from human CD5
Specificity	This antibody detects endogenous levels of human CD5. Heat-induced epitope retrieval (HIER) Citrate buffer of pH6.0 was highly recommended as antigen repair method in paraffin section
Formulation	Liquid in PBS containing 50% glycerol, 0.5% BSA and 0.02% sodium azide.
Source	Mouse, Monoclonal/IgG2a, Kappa
Purification	The antibody was affinity-purified from mouse ascites by affinity-chromatography using specific immunogen.
Dilution	IHC-p 1:100-500, WB 1:200-1000
Concentration	1 mg/ml
Purity	≥90%
Storage Stability	-20°C/1 year
Synonyms	
Observed Band	
Cell Pathway	Cell membrane; Single-pass type I membrane protein.
Tissue Specificity	Lymphocyte, Pancreas, Tonsil,
Function	function: May act as a receptor in regulating T-cell proliferation. CD5 interacts with CD72/LYB-2., similarity: Contains 3 SRCR domains.,
Background	function: May act as a receptor in regulating T-cell proliferation. CD5 interacts with CD72/LYB-2., similarity: Contains 3 SRCR domains.,
matters needing attention	Avoid repeated freezing and thawing!
Usage suggestions	This product can be used in immunological reaction related experiments. For more information, please consult technical personnel.



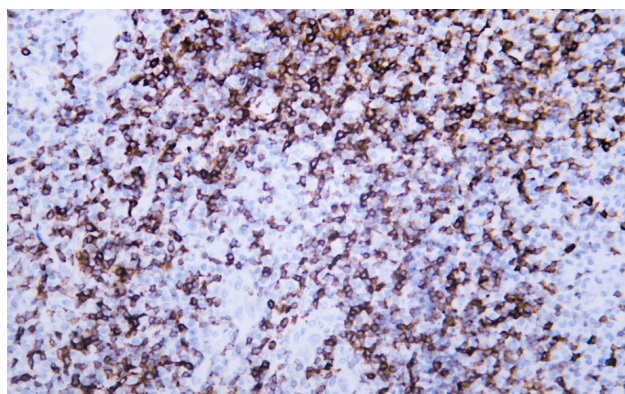
Products Images



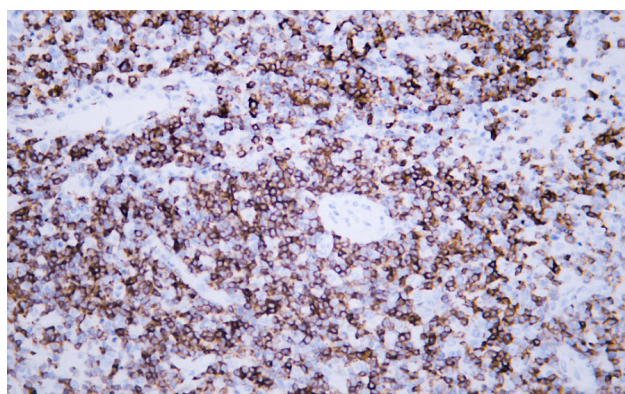
Human colon tissue was stained with Anti-CD5 (ABT-CD5) Antibody



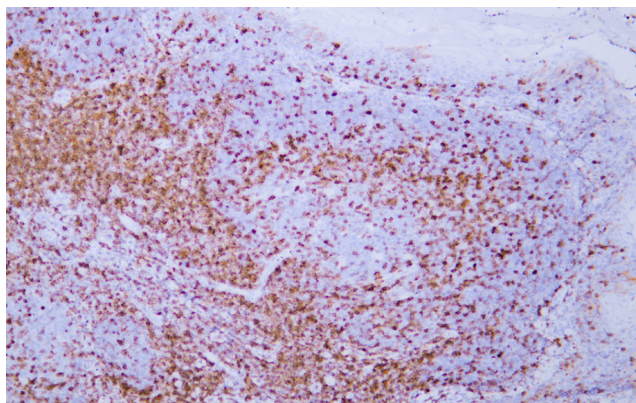
Human lymphoma tissue was stained with Anti-CD5 (ABT-CD5) Antibody



Human lymphoma tissue was stained with Anti-CD5 (ABT-CD5) Antibody



Human lymphoma tissue was stained with Anti-CD5 (ABT-CD5) Antibody



Human tonsil tissue was stained with Anti-CD5 (ABT-CD5) Antibody